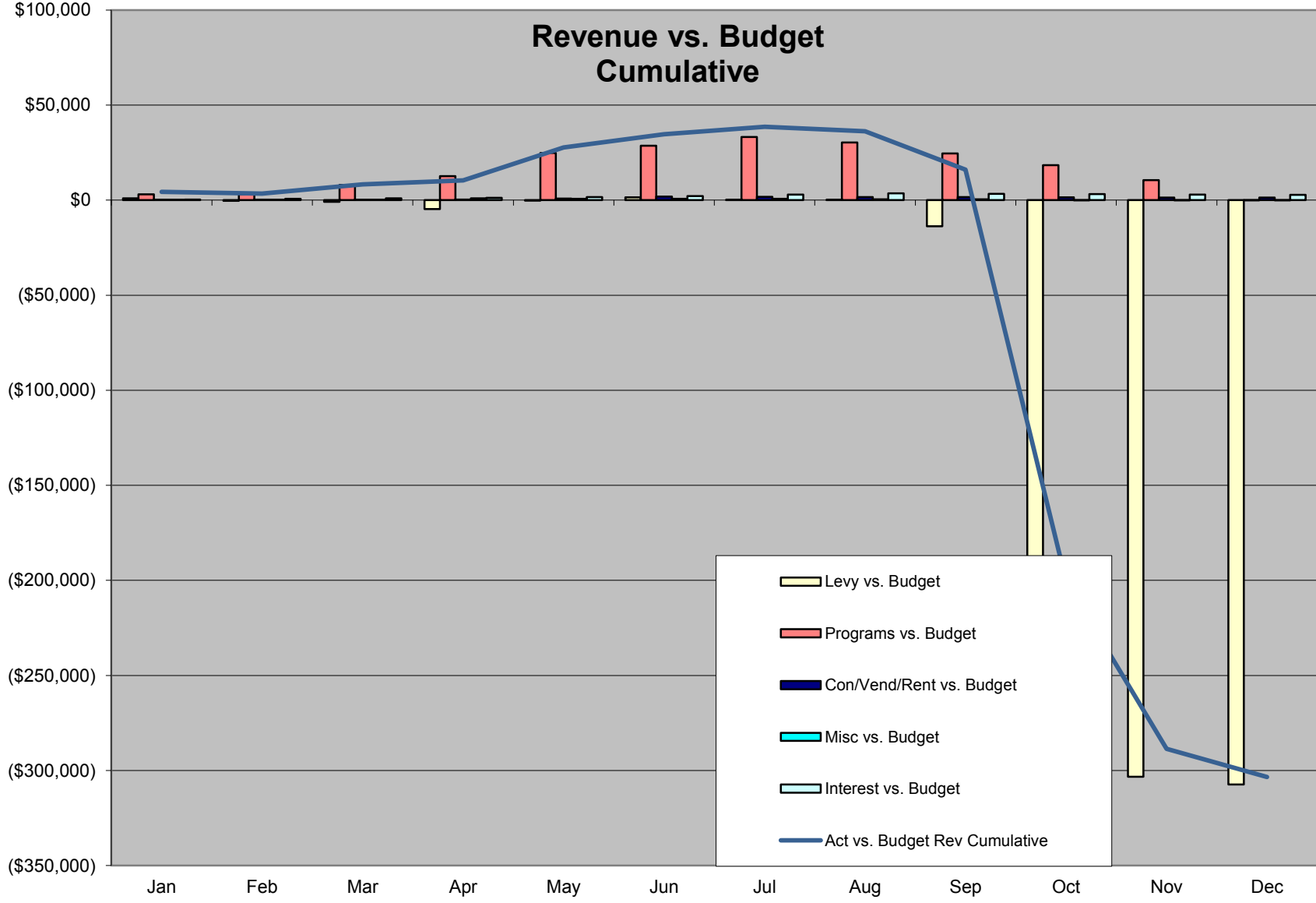
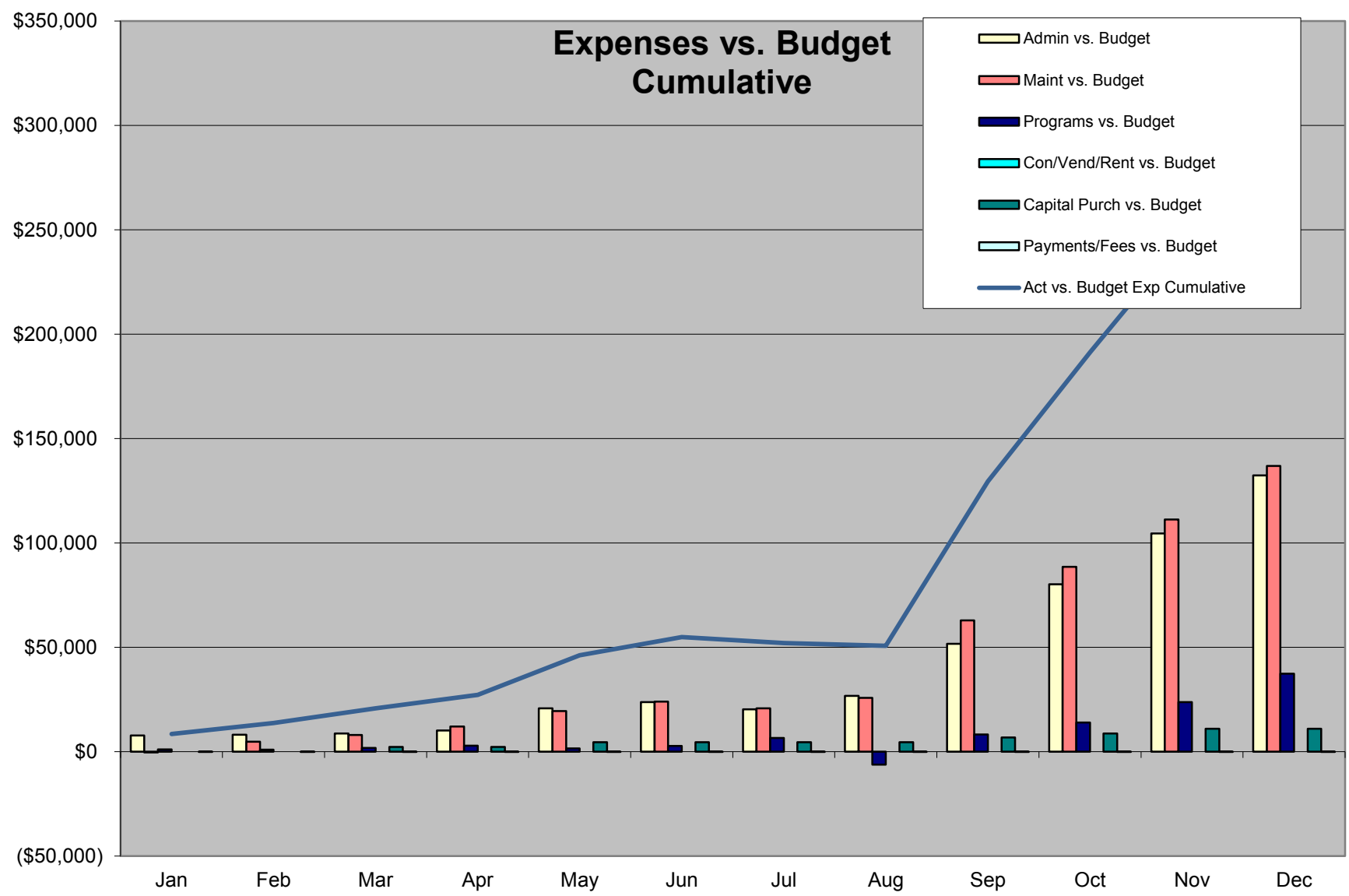


### Revenue vs. Budget Cumulative



## Expenses vs. Budget Cumulative

- Admin vs. Budget
- Maint vs. Budget
- Programs vs. Budget
- Con/Vend/Rent vs. Budget
- Capital Purch vs. Budget
- Payments/Fees vs. Budget
- Act vs. Budget Exp Cumulative



# Fund Balances

